

REVLON

Limited 24-Month Warranty

This appliance is warranted against defects in material or workmanship for 24 months from date of purchase by returning to the store where purchased. Any problems arising from misuse, attempts at repair, dropping or extreme wear are not covered by this warranty.

The store where this item was purchased is authorised to make an exchange only if the return is made within 30 days from purchase.

This warranty gives you specific legal rights, and you may also have other rights, which may vary depending on where you live.

The trademark REVLON is used under licence from
Revlon Consumer Products Corporation

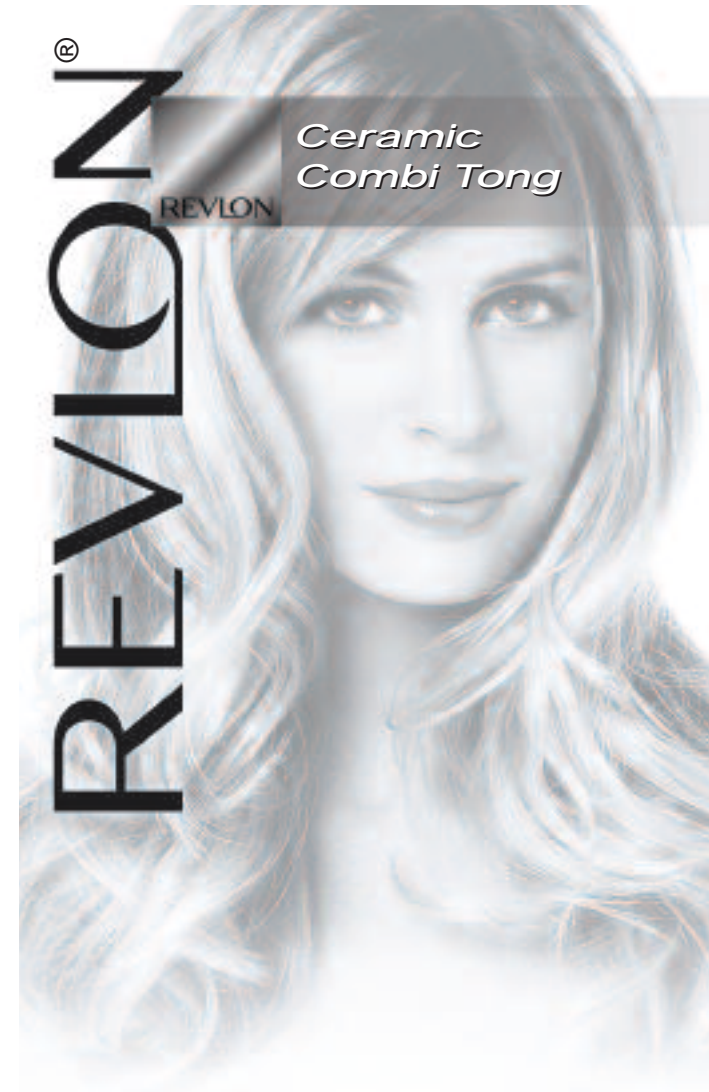
For more information on the Revlon range of appliances and for repairs out of warranty, please direct queries:

Made in China

Distributed in Australia by:
H.E. Group Pty Ltd
57 Waverley Road
Malvern East, Vic. 3145
Free call 1800 079 124
www.hegroup.com.au

For product information, visit us
at www.HelenofTroyUSA.com

© Revlon (RVI-414)



*Ceramic
Combi Tong*

REVLON

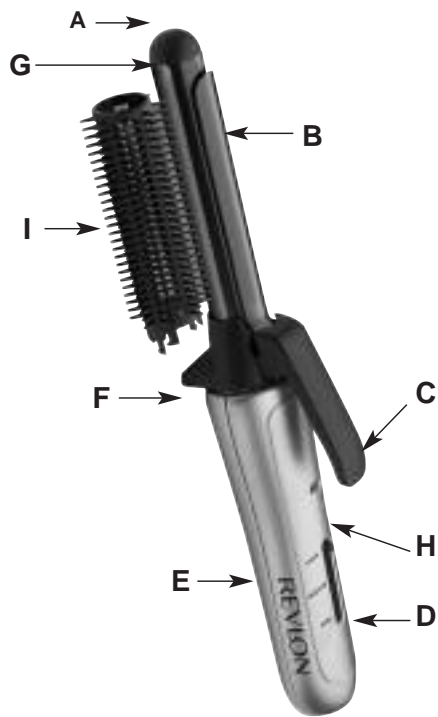
REVLON®

Model RV102AA (900050)

Important Safety Instructions

Operating Instructions

This appliance is intended for household use only.



Appliance Features:

- A - Cool tip
- B - Clamp
- C - Thumb clamp
- D - Variable heat selector control
- E - Handle
- F - Safety stand
- G - Barrel
- H - "On" indicator light
- I - Brush attachment

SAVE THESE INSTRUCTIONS

Read all instructions before using

Important Safety Instructions

WARNING: Do not use this appliance near water contained in bath-tubs, basins or other vessels. This appliance is not intended for use by young children or infirm persons without supervision. Young children should be supervised to ensure that they do not play with the appliance.

Keep this appliance away from water. Never use curling tongs while bathing, in damp rooms, or over a hand basin or vessel filled with water. Neither should the appliance be used with wet hands nor immersed in water, held in running water, or allowed to become wet (e.g., as in splashing). Always unplug appliance when not in use. While using the hot curling tongs, do not let bare skin or eyes touch heated surfaces. Do not place heated appliance on any heat-sensitive surface when hot or when plugged in. Always use the safety stand whenever placing appliance on a countertop.

Note: Use on dry hair only. Do not use your curling tong on synthetic hair wigs.

Heating the Appliance

Plug the curling tong into a main. Slide the variable heat control to the "Fine" position for fine, thin hair types; the "Medium" position for medium hair types; and the "Thick" position for thick, coarse hair types. The "On" indicator light will glow to indicate tong is operating. Allow the unit a few minutes to heat up. Never leave curling tong on and unattended. To turn the appliance "Off," unplug the appliance immediately after using.

Styling

Once the appliance is heated and ready for styling, select your heat level; high heat for thick hair, low heat for fine hair. To add soft body and extra volume, simply roll hair ends under. Slowly unroll hair and release clamp button. Let hair cool before combing or styling to allow curls to set. To shape and sculpt curls in hair, just roll hair ends under. Let hair cool and do not brush; simply shake head for curls to fall together.

Cleaning

Always unplug the appliance from its power source after each use and allow it to cool. To clean, wipe the tong with a damp cloth. Make certain the appliance is completely dry before using. Keep heated surfaces

clean and free of dust, dirt, styling sprays and gels.

Storage

When not in use "unplug it."

Allow the appliance to cool and store in a dry location. Never wrap the cord around the appliance, since this will cause the cord to wear prematurely and break. If the supply cord of this appliance becomes damaged, the appliance must be replaced by returning to the retailer from which the product was purchased or a similarly qualified person in order to avoid a hazard. Regularly check the main cord for wear and damage, particularly where it enters the appliance and the plug.

WARNING: If any malfunction occurs, do not attempt to repair it. This appliance has no user-serviceable parts.