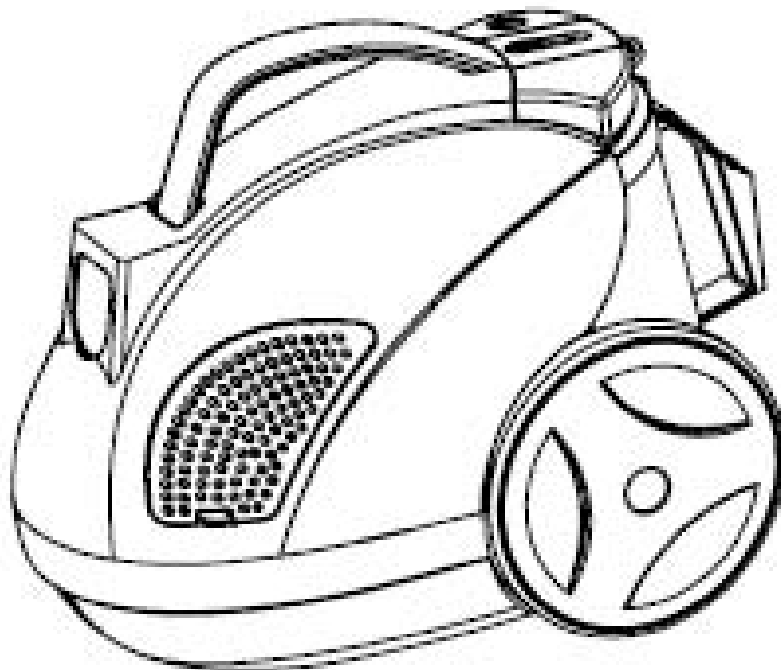




PIRANHA HERO
1800W Vacuum Cleaner
USER MANUAL

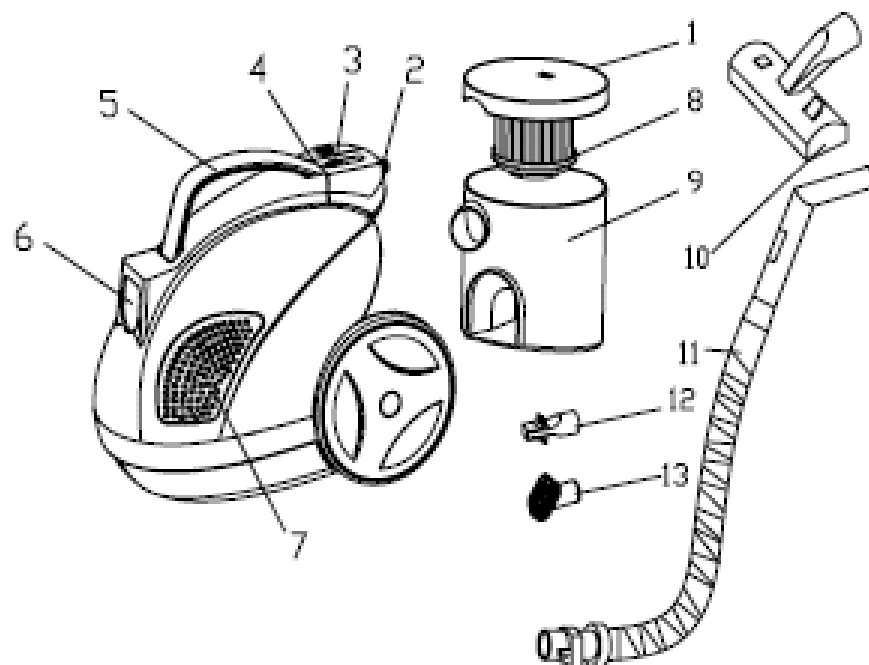


ITEM NO: 900011

PARTS DESCRIPTION

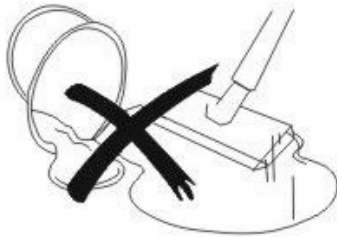
PART NAMES:

1. Dust tank cover
2. Dust tank locker
3. Speed regulator (Optional)
4. Power switch (on/off)
5. Handle
6. Hose socket
7. Air outlet grill
8. HEPA filter
9. Dust tank
10. Floor brush
11. Hose assembly
12. Combined nozzle
13. Round brush



IMPORTANT

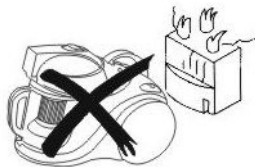
- Read this instruction booklet carefully before operation.
- Before using the appliance, check that the mains power voltage corresponds with the voltage shown on the rating plate.
- Always remove the plug from the power socket when the appliance is not in use and before carrying out any maintenance operations.
- Always remove the plug from the power socket before opening the appliance.
- Do not use the appliance to vacuum liquids, due to electric shock hazard.
- Do not use the appliance to vacuum sharp objects.



- Do not use the appliance to vacuum lighted cigarettes, hot ashes and any other combustible objects.



- Do not use the appliance to vacuum tiny particles like cement or plaster dust as this will shorten the life of the motor.
- Keep the vacuum cleaner away from stoves, heaters and any other heat emitting appliances. Heat can deform and discolour the plastic parts.



- Do not block the air flow. Blocking the suction in any way (e.g. blocked filters, blocked hose or full dust bag) will decrease the efficiency and will shorten the life of the motor.
- Do not run the vacuum cleaner over the power cable.
- Never leave the appliance unattended when it is switched on.
- The appliance is not intended for use by young children or infirm persons without supervision.
- Young children should be supervised to ensure that they do not play with the appliance.
- This appliance is for domestic use only. Commercial use voids warranty.
- Do not unplug by pulling the power cord. Always unplug by pulling the plug.
- Use as described in this instruction booklet.
- Do not switch the appliance on if it appears to be faulty in any way.
- For repairs or accessories contact the distributor on the contact details outlined in the guarantee.

PIRANHA STAR MAXIMUM PARTICLE FILTRATION SYSTEM

HEPA (High Efficiency Particulate Air) filters are an effective system in removing almost all indoor pollutants, dust mites, pollen and mould spores.

ASSEMBLING THE VACUUM CLEANER

Always remove the plug from the power socket before fitting or removing accessories

Fitting the Flexible Hose

Insert the flexible hose into the hose socket on the front cover of the appliance. Press the flexible hose into the hose socket until the hose clicks into place.

Removing the Flexible Hose

To remove the flexible hose, press the locking buttons on the top of the flexible hose to release the lock. Pull the flexible hose out of the hose socket.



Fitting the Telescopic Tubes and Accessories

Attach the telescopic tubes to the curved handle of the flexible hose. To extend the tubes, push on the button at the centre join and pull the inner tube outward.



Attach the preferred cleaning accessory to the end of the telescopic tube.

Removing the Telescopic Tubes and Accessories

To remove the plastic tubes and accessories, hold each piece tightly and pull firmly apart.

OPERATION METHOD

1. Unwind the length of power cord required and insert the plug into the power socket. A **YELLOW** mark on the power cord indicates the ideal cable length. Do not extend the power cord beyond the **RED** mark.



2. Press the On/Off Switch to switch the appliance ON.

3. Adjust the Suction control knob on the curved handle to control the suction. The suction will be reduced with a larger air opening.

4. Adjust the Power Control Dial to the Min or max Power setting you require. This function controls the power of the motor. It is recommended to keep it on Max to receive full benefit from the vacuum.

Retracting Cord

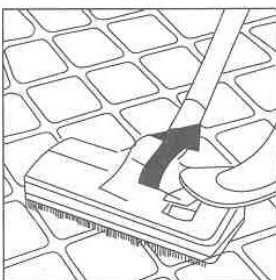
To rewind cord press on cord rewinding pedal. **CAUTION:** Cord retracts very quickly. Take care to avoid injury.



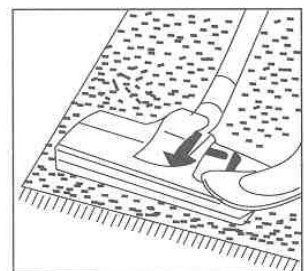
Using the Cleaning Accessories

- **Dual position carpet / floor brush**

Position 1: Bristles extended
- For hard floors



Position 2: Bristles retracted
- For carpets



- **Integrated Brush and Nozzle**

For cleaning radiators, corners edges, drawers, curtains shelves, books, inlaid furniture, lamps and other delicate objects.



- **Round Brush Tool**

For cleaning dust from tables, furniture etc.



MAINTENANCE

NOTE: Always remove the power plug from the wall outlet before carrying out any maintenance.

Cleaning the Dust Container

1. Press the container release button and pull the Dust Container out.
2. Hold container over a rubbish disposal bin. Then press button to open the base of the Dust Container and dispose of the contents.
3. Close the container and replace in the housing. Close front cover ready for operation.



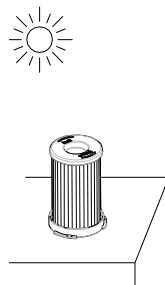
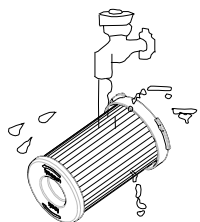
Maintaining Filters

It is very important to keep the filters clean to receive maximum performance from the vacuum. Not cleaning not replacing your filters regularly can reduce the suction power and cause overheating.

1. To clean the HEPA filter, lift the lid of the dust container and twist the HEPA filter and remove it.



2. Wash the HEPA Filter under running tap water and allow to dry completely before replacing it in the appliance.



3. To clean the exhaust filter, detach the side grill by pulling firmly away from the appliance. Remove the filter and wash under running water and allow to dry completely before replacing it in the appliance.



4. Filters should be replaced approximately every few months depending on how frequently the appliance is used.
5. Filters can be purchased from the distributor.