



**Hand Held Steam
Cleaner
USER MANUAL**

Item Code: 900032

IMPORTANT SAFEGUARDS

When using an electric appliance, basic precautions should always be followed, including the following:

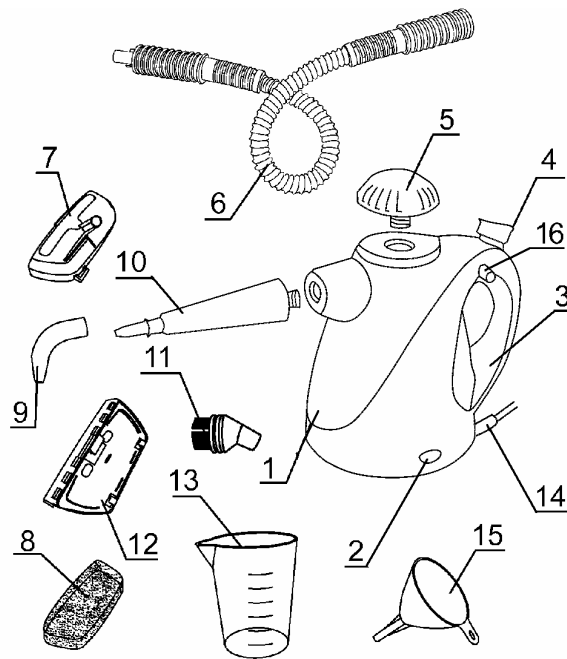
READ ALL INSTRUCTIONS BEFORE USING THIS POWER STEAMER

WARNING **DANGER OF SCALDING**

To reduce the risk of fire, electric shock, or injury:

- This product is designed for domestic use only.
- Do not use outdoors.
- Do not leave steamer unattended while switched on. Turn off the switch and unplug the electrical cord when not in use and before servicing.
- Do not allow to be used as a toy. Close attention is necessary when used near children, pets or plants.
- The appliance is not intended for use by young children or infirm persons without supervision.
- Young children should be supervised to ensure that they do not play with the appliance.
- Never turn the appliance over on its side when in operation. Never direct steam towards people, animals or plants, or equipment containing components.
- The filling aperture of the water container must not be opened during use.
- Instructions for safe refilling of the water container shall be given.
- The liquid or steam must not be directed towards equipment containing electrical components, such as the interior of ovens.
- Do not immerse the steamer into water or other liquids. Always unplug the power cord from the electrical socket when filling the steam cleaner.
- Appliance and accessories will get hot during use. Do not touch heated areas. Switch off and allow to cool before changing heated accessories.
- Do not use with damaged cord or plug. If steamer is not working as it should, has been dropped, damaged, left outdoors, or immersed into water, return it to the distributor before continuing use. If the supply cord is damaged, it must be replaced by the manufacturer or a similarly qualified person in order to avoid a hazard.
- Do not pull or carry by cord, use cord as a handle, close a door on the cord, or pull cord around sharp edges or corners. Keep cord away from heated surfaces.
- Do not use extension cords or outlets with inadequate current carrying capacity.
- Unplug after use. Do not unplug by pulling on cord. To unplug, grasp the plug, not the cord.
- Do not handle plug or steam cleaner with wet hands or operate without shoes.
- Do not insert any objects into openings. Do not use with any opening blocked.
- Store your steamer indoors in a cool, dry area.
- Keep your work area well lighted.
- Never put cleaning detergents into the Power Steamer. This will make the operation unsafe and damage the unit.
- Use only as described in this manual. Use only manufacturer's recommended accessories.

SAVE THESE INSTRUCTIONS



KEY FEATURES

1. Body
2. Power Indicator
3. Handle
4. Steam Lever
5. Water Tank Cap
6. Flexible Hose
7. Fabric Accessory
8. Cloth Covering for Fabric Accessory
9. Curved Nozzle Accessory
10. Jet Nozzle Accessory
11. Round Brush Accessory
12. Window Cleaning Attachment
13. Measuring Cup – 300ml
14. Power Cord
15. Funnel
16. Lock button for steam lever

DESCRIPTION

Thank you and congratulations for choosing the Piranha Deluxe Steam Cleaner. The Steam Cleaner is a new way of cleaning that is effective and far more hygienic than conventional methods.

The Piranha Deluxe Steam Cleaner achieves a high degree of hygienic and degreasing power by converting water into steam in minutes to eliminate dirt and grime from surfaces once contact is made.

When used correctly, the steam cleaner can kill dust mites and some types of bacteria such as E-Coli. To disinfect desired areas such as bathroom and kitchen surfaces and pet sleeping quarters, hold the stream cleaner no more than 2.5cm over the surface and move slowly across to cover the entire area.

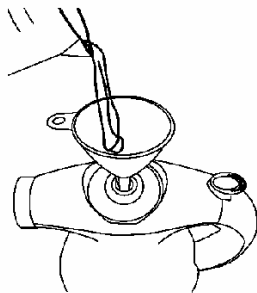
INSTRUCTIONS FOR USE

The Piranha Power Steamer can clean and disinfect all types of surfaces designed to withstand high temperatures such as marble, ceramic, stone sealed wood, sealed grout, cook tops, window, mirrors, etc. It is not recommended for use on unsealed wood surfaces, cold glass and soft plastic areas.

RECOMMENDATIONS: It is highly recommended that you check the use and instructions of any surface from the manufacturer to ensure the suitability to steam cleaning. You may also choose to perform a test clean on the surface in an inconspicuous area.

- On surfaces that have been treated with wax, the wax may be removed by the heat and steam action. Do not use on unsealed wood floors or direct steam on any wood floor for an extended period of time. This may cause the wood grain to rise.
- On all fabric or upholstered surfaces, please check the care instructions accompanying the item. If no instructions are present, contact the manufacturer of the item for advice.
- In the case of using the steam to smooth wrinkled fabric or clothing, do not direct steam at the body.

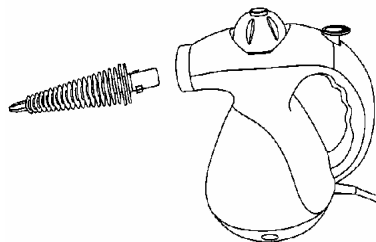
ASSEMBLY AND USE



WARNING: The steam lever must be held in operation until all steam pressure has been released prior to removing the Water Tank Cap. Please also note that the unit is not to be plugged into an electrical outlet until step 8.

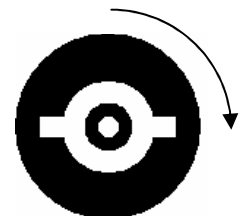
1. The water Tank cap incorporates a child proof lock. You need to press down the Water Tank Cap to Unscrew it and insert the funnel. Using the measuring cup fill tank with one measure of water equivalent to 330ml. **NOTE: Do not over fill.**
2. Re-seal the water tank by screwing the Water Tank Cap back into place. **Please note, to tighten the cap, you must press it down to screw.**

USE OF ACCESSORIES



Before using the Power Steamer, the attachment of an accessory will be required in conjunction with the type of surface to be cleaned.

3. The Jet Nozzle, Fabric Accessory and Flexible Hose fit directly onto the body. To do so you must align and push the locking tabs on the accessory to fit through the provision on the body. Turn the accessory clockwise as indicated to lock securely in place.

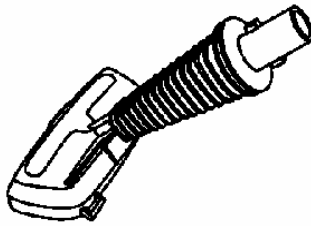


4. To use the Flexible hose, the Jet Nozzle or the Fabric Accessory must be attached onto the end using the same process as outlined in step 3.



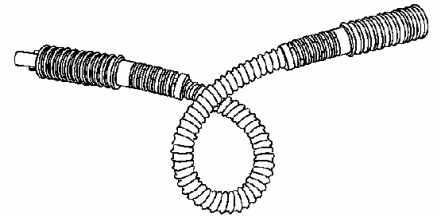
Jet Nozzle

Handy to use on floors and edges



Fabric Accessory

Great for steaming wrinkles and creases out of fabrics



Flexible Hose

Recommended to use for hard to reach areas.

5. The Round Brush and the Curved Nozzle Accessory can be attached to end of the Jet Nozzle by pushing the accessory on using the hexagonal alignment as a guide.

Round Brush recommended for sealed grout, cook tops and bench tops.



Round Brush

Curved Nozzle recommended for hard to reach area such as window sills and toilet bowls.



Curved Nozzle

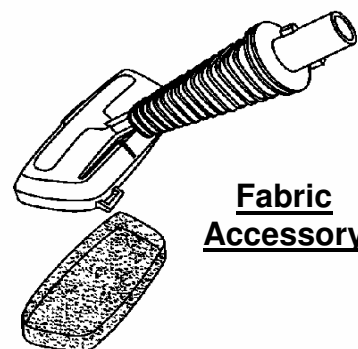


Window Cleaning Attachment

6. To use the Window Cleaning attachment it must be clipped into the Fabric Accessory by hooking the two hinges onto the tabs and lifting the window cleaner around to the top of the fabric tool and clipping the latch onto the fabric cleaner to secure in place. To remove the window cleaner, simply lift the latch to unclip and separate. **WARNING: Using window cleaner on cold glass may cause the glass to break.**

7. To use the Fabric Accessory, stretch the Cloth Covering to fit over the Fabric Accessory.

It is recommended that the Fabric Accessory be attached to the flexible hose for maximum accessibility for clothing, upholstery and window furnishings.



Fabric Accessory

STARTING THE POWER STEAMER

8. Plug the power cord into an electrical outlet. This will switch the power indicator light ON.
9. It will take approximately 3-4 minutes for the appliance to generate the steam.
CAUTION: Do not leave the steam cleaner unattended while waiting for steam.
10. Press the Steam Lever to emit the steam and begin passing slowly over the surfaces intended for cleaning. For disinfecting areas, hold the steam cleaner no more than 1 inch away from the surface and pass over slowly until entire area is covered.
Please note: you can lock the steam lever by pressing the lock button to prevent children using it.

REFILLING THE WATER TANK

11. Unplug the power cord from electrical outlet.
12. Press and hold Steam Lever until all pressure has been released.
13. Before opening Water Tank Cap it is important to wait approximately 3 minutes for the appliance to cool down. Slowly turn the cap, only a half turn, and wait for the hissing sound (if any) to completely stop. The hissing sound may be present due to residual pressure not released while holding the steam lever.
14. Carefully unscrew the cap and follow process outlined in step 1 and 2.

MAINTENANCE

NOTE: Please ensure the steam cleaner has been unplugged from the power source and cooled down before any cleaning and maintenance is carried out.

15. Always empty any excess water from water tank after each use.
16. Always ensure the unit has cooled before putting it away in a dry, cool place.
17. To ensure the highest level of operation over a long period of time, it is recommended that the water tank be rinsed out with water at least once a month to clean any water calcification accumulated. **Do not use vinegar or other substances to remove calcium deposits.**
18. To clean fill with one measure of water, replace cap and shake unit to loosen any calcium deposits. Remove cap and empty water from tank.
WARNING: Do not immerse the steam cleaner in water.

TROUBLESHOOTING GUIDE

PROBLEM	REMEDY
Unit will not switch ON.	Ensure the power cord has been plugged into a power socket and the outlet is switch ON. Check the water tank is filled correctly Try another power outlet.
Unit is not producing steam.	Ensure that the water tank has been filled with the correct level of water. Ensure the unit is plugged into a power outlet. Press Steam Lever Ensure there is no blockage, try changing accessory
Unit sprays out water from nozzle.	Level in water in tank may be too high. Check water tank and do not overfill. Hold in upright position. Do not turn the steamer on its side. Unit not fully heated. Allow the unit time to heat the water
Accessories, once attached do not stay on	Check that enough force has been applied to ensure the accessories are secured. Read over accessory installation steps.