

Homemaker  
*lifestyle*™

Red Blender  
USER MANUAL



ITEM NO: 900618

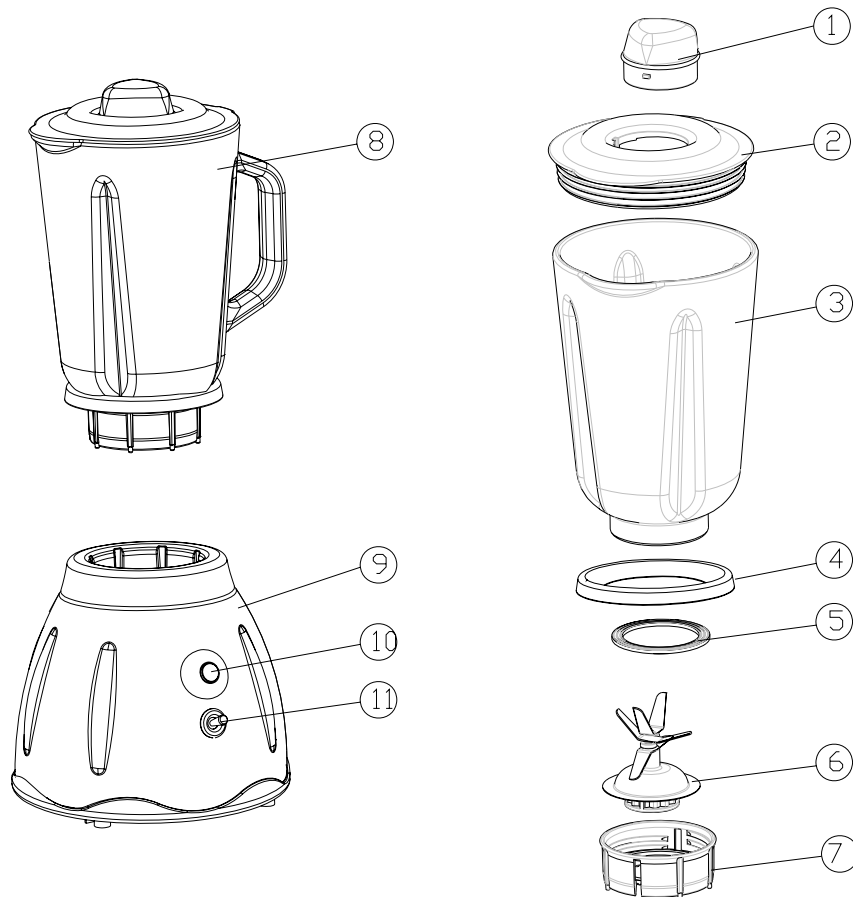
## **IMPORTANT**

- Read this instruction booklet carefully before operation.
- Before using the appliance, check that the mains power voltage corresponds with the voltage shown on the rating plate.
- Always remove the plug from the power socket when the appliance is not in use and before carrying out any maintenance operations.
- Do not immerse in water for cleaning;
- Never leave the appliance unattended when it is switched on.
- The appliance is not intended for use by young children or infirm persons without supervision.
- This appliance is not a toy must not be used by children.
- Do not insert utensils into the glass jug whilst in use.
- This appliance is for domestic use only. Commercial use voids warranty.
- Do not unplug by pulling the power cord. Always unplug by pulling the plug.
- Use as described in this instruction booklet.
- Do not switch the appliance on if it appears to be faulty in any way.
- For repairs or accessories contact the distributor on the contact details outlined in the guarantee.

## **SPECIAL SAFETY INFORMATION**

- Always run mixer with the lid in place
- Keep your hands and cooking utensils away from the unit during use and do not insert any objects into the unit. You can use a spatula, but only if the unit has been switched off.
- The cutting knives are extremely sharp. Please handle them very carefully, particularly while inserting, removing or cleaning them.
- This unit is not suitable for grinding hard food items such as nuts, or coffee beans.
- Please make sure that the unit is fully assembled before switching on for use and that the unit is switched off before dismantling.

## PARTS DESCRIPTION



- |               |                 |                  |
|---------------|-----------------|------------------|
| ① Inner cover | ⑤ Sealing ring  | ⑨ Base Motor     |
| ② Lid         | ⑥ Cutting blade | ⑩ On /Off switch |
| ③ Glass jug   | ⑦ Cup base      | ⑪ Pulse switch   |
| ④ Press ring  | ⑧ Jug assembly  |                  |

## OPERATION

### Before first use

All parts of the blender are to be thoroughly cleaned before being used for the first time.

### Assembly of the glass jug

1. Put the rubber sealing ring (5) and press ring (4) on the inner edge of the blade unit (6).
2. Put the blade unit (6) with sealing ring and press ring into the cup base (7).
3. Mount the glass cup (3) onto the cup base unit and tune the cup base unit in clockwise direction until it is fixed.
4. After putting the ingredients in the cup, fix the lid (2) onto the cup by pressing down.
5. Insert the inner cover (1) into the opening of the lid, and tune it in clockwise direction until it is locked.

## Inserting the glass jug

1. Make sure that the blender is switched off (Switch in the '0' setting).
2. Place the jug assembly (8) onto the motor block (9) in right position.

## Use

1. Place the foodstuff you wish to process into the glass jug.
2. Put the lid on the glass jug and close securely. Place the inner cover into the hole in the lid and turn clockwise to lock.
3. Switch on the motor block with toggle switch or push switch.

Speed setting                      Use

---

position **1**                      for light usage with liquids

---

position **2**                      for more solid consistency – for mixing liquids  
and solid foodstuffs

---

position **pulse** for ice crushing & short, powerful impulse  
movements (You have to push the position pulse  
switch repeatedly )

---

After using the blender, always move the switch into the 'OFF' setting and pull out the mains plug.

Just lift it up to remove the glass jug.

## Useful tips

- To achieve the best results when pureeing solid ingredients, place small portions into the glass jug one by one instead of placing a large quantity all at once.
- If you are processing solid ingredients, cut them into small pieces (2-3cm) first.
- When mixing solid ingredients start off first with a small amount of liquid. Gradually add more and more liquid through the opening in the lid.
- Always place your hand on top of the blender when you are operating the device.
- Be careful when processing hot liquids.
- For stirring solid or very thick liquid ingredients we recommend that you use the blender in impulse mode to prevent the blades from becoming stuck.

## Base Motor

Never immerse the motor block in water. Wipe it only with a moist cloth.

## Simple cleaning/ rinsing out the assembled glass jug

Empty the glass jug and fill it with water. Place the glass jug on the motor block and turn the push switch several times. Empty the glass jug and rinse until clean.

For thorough cleaning of the dismantled glass jug, ensure that the glass jug is completely empty before you unscrew the retaining ring. Be careful when handling the cutting blade. All removable parts are suitable for the dishwasher.

## **GUARANTEE**

### **WHAT'S COVERED**

**H.E. Group Pty Ltd** guarantees this Homemaker Lifestyle Blender for a full replacement for a period of 12 months from the date of purchase, which is only valid with the presentation of the original proof of purchase receipt. This guarantee covers materials and workmanship defects only.

### **WHAT IS NOT COVERED**

This guarantee does not apply to defects arising from abuse, alteration or unreasonable use of the product. It also does not cover general deterioration due to usage.

This guarantee does not apply to the **accessories** due to general deterioration.

### **CUSTOMER CARE**

All queries may be directed to our friendly customer service team on free call **1800 079 124** or via email [info@hegroup.com.au](mailto:info@hegroup.com.au)